



ALUNA WINDOW

Luxury aluminium windows and rooflights by **ALUNET**
SYSTEMS



Luxury Aluminium By



You asked, we listened. Making fabrication and installation easy!

Continually investing to add value to our customers whilst offering the best all-round performance aluminium products to the UK market, Alunet Systems' entire Aluna range provides premium security, luxurious durability, and robust functionality as standard.

Making it easy is a key attribute of the Aluna product family, as is never standing still with regards product design and differentiating product features. Made from marine grade aluminium our Aluna range is specifically designed and manufactured with enhanced corrosion resistance enabling a finished product that not only looks good immediately after installation, but it also continues to perform and retain that luxurious finish for years to come.

With Aluna, the premium aluminium range from Alunet Systems, you can fabricate and install an entire house project – Making It Really Easy!

There are several reasons that Aluna is fast becoming the go-to brand of choice in the UK for luxury aluminium, but here is an overview:

Everything we design and do has our customers at the heart, front, and centre.

Pas24 certified luxury aluminium across all of our Aluna range.

Unrivalled strength and durability. Aluna is strong, durable, lightweight and corrosion resistant to withstand any weather.

Excellent thermal efficiency.

Secure and highly attractive.

We have a vast UK stock holding of our standard colours.

Available in all RAL colours on request.

Super Slim Sash available.

Arguably the best all-round performance, including excellent security, durability and functionality. We can offer you the best aluminium products the market has to offer. Get in touch today to discover the vast opportunities our Aluna family is opening the doors to!



SLIM LUXURY ALUMINIUM CASEMENT WINDOWS

The ALUNA Window's super slim sash offers minimal sightlines for maximised views. Secure to PAS24:2022 certification, the ALUNA Window exceeds Part L compliance with a WER rating of A, and a new built requirement of 1.4 W/(m²k) is achieved when combined with highly energy efficient glass.

The ALUNA Window is available with 81mm outerframe as standard, or with the NEW 73mm outerframe which seamlessly couples with our ALUNA Bifold door system, and even shares some of the same components. The new profile is perfect when using the window system as sidelights with openers to the bifold system. It can even be glazed from the inside and the outside for simple, pain-free installation.

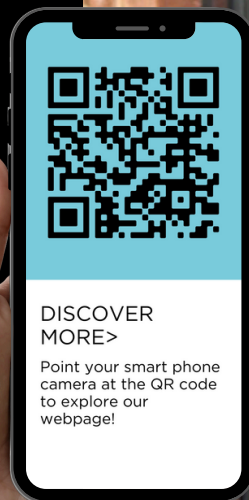
Why choose Aluminium?

Aluminium is extremely durable and more hard-wearing than other materials on the market. You'll be able to enjoy ALUNA marine grade aluminium windows for decades to come due to their high resistance to the elements.

It is also an incredibly strong material, providing a high level of security and impact resistance.

Aluminium windows are among the best insulated on the market, thanks to advanced thermal break technology, which prevents cold transfer.

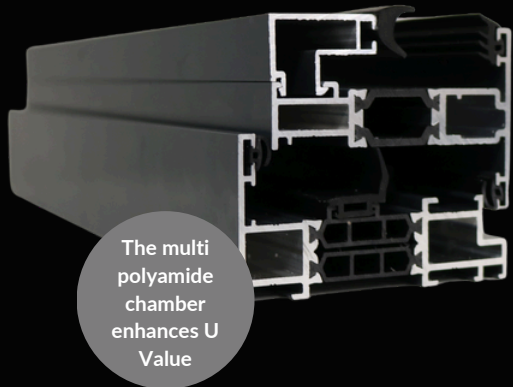
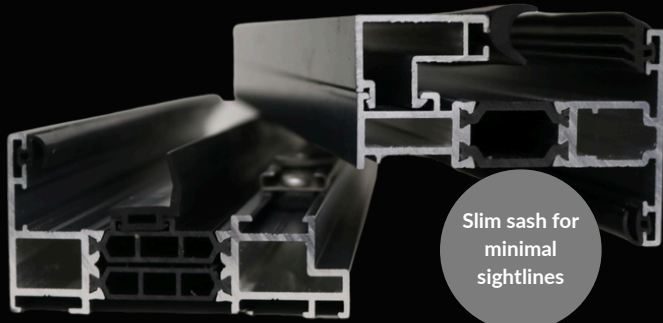
They require very little maintenance to ensure optimal performance and a fresh aesthetic.



The ALUNA Window is available with our standard or super slim sash for minimal sightlines. Flush options are also available for enhanced aesthetics.

With its elegant, contemporary design, the ALUNA Window perfectly complements our other ALUNA systems, bringing you a cohesive range of products. All configurations of the ALUNA Window system can be finished in several glazing options to create a style that suits any property.

- 28-44mm glazing options
- Heritage/ flush & standard window options
- 1.4 U-value
- Energy rating A (WER)
- Side hung / top hung / fixed light options available
- NEW 73mm aluminium profile option perfectly complements the ALUNA Bifold system



HARDWARE

MILA HANDLES

The Mila handle is available in 5 suited finishes, including **Polished Gold, Polished Chrome, Smooth Satin Chrome, White, Black.**

Manufactured to be ease of operation in mind, the modern design features an ergonomic lever contoured to the shape of your hand, and a tear drop button that offers comfort during use. Complete with a **high-security locking system**, the handles are extremely reliable having been tested up to **50,000 cycles**. Additionally, the handles come with **10-year guarantee**, for extra peace of mind.



COASTAL STAINLESS STEEL RANGE

The high-quality window handles from Coastal offer a sleek, contemporary look with no compromise on security.

The **super slim design** flawlessly complements the aluminium windows, while the **lockable system** is ideal for those safety-conscious homeowners.

The handles are manufactured from solid **316 Marine Grade Stainless Steel**, which is also available in PVD Satin Black Finish.





10
YEAR
GUARANTEE

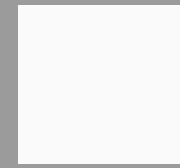
PAS24
COMPLIANT

SUPER-
SLIM
SASH

Colours

Our windows are available in three standard colours, plus two dual colour options.

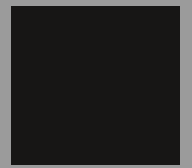
For projects requiring bespoke coloured doors, any RAL colour can be available upon request.



White
RAL9016



Anthracite
Grey RAL7016



Black
RAL9005



Grey Out/
White In



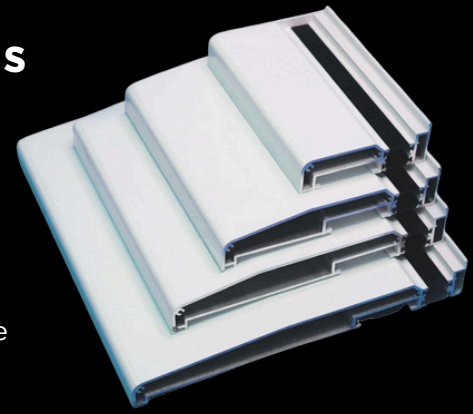
Black Out/
White In



Bespoke RAL
colour

Universal Aluminium Cills

Our range of universal **aluminium cills with screw ports** are compatible with most other door and window systems, including our ACW81 window system. They effectively direct water away from brickwork while providing an additional design element to the aesthetics of the window.



Our aluminium cill is more robust than PVC alternatives and comes complete with plastic push-in colour-matched end caps in our standard stock colours, for a secure and sleek finish.

Cill sizes are **90mm, 150mm, 190mm** and **230mm**.

Available in Black, White, Anthracite Grey, textured mill finish, and dual colours of White/Anthracite Grey and Black/White, and can also be powder coated in any RAL colour.

Thermal Efficiency

The ACW81 system exceeds Part L compliance with a WER rating of A, and new built requirement of 1.4 W/(m²k) is achieved when combined with energy efficient glass.

Weather Resistance

Excellent weather sealing is achieved using specially designed **perimeter seals**, with the option of **weather piles** for lower thresholds. Weather tightness tested to British standards.

Low Maintenance

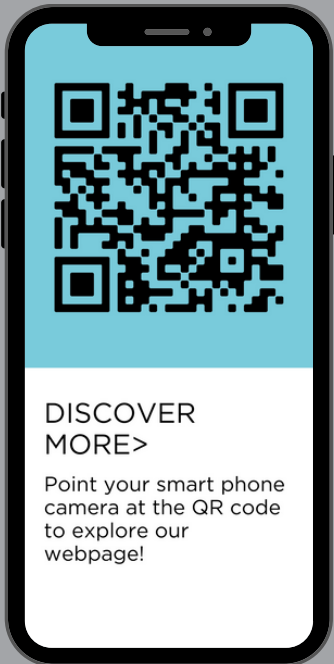
Our **low maintenance** aluminium windows are strong, durable and highly **corrosion resistant**. Unlike timber, they don't need painting or staining to keep them **weatherproof**, and they won't rust or corrode. They will also never rot, peel or flake.

Maximum Vision

The **ACW81 Window** is designed to collaborate all our aluminium products. The **super slim sashes** are a great option to complement the **slim profile** of our modern bifold and patio doors to make the most of your stunning views.

DISCOVER MORE

Scan the QR code below to find out more about the fantastic features and benefits that our ACW81 aluminium window system has to offer.





ALUNA
WINDOW

Luxury Aluminium By

ALUNET
SYSTEMS

Aluna Rooflights

Luxury marine grade aluminium Rooflights designed to a high specification; unrivalled strength and durability, thermally efficient, safe and secure, all without compromising Aluna's highly attractive modern style. SLEEK, STRONG, SECURE.

Rooflights are a great addition to any room, enabling vast amounts of extra light in to any home during the day and look perfect at night, whilst providing a traditional and contemporary design to complement a broad range of home styles and designs.



INVITE THE LIGHT IN!

For more information on our
luxury ALUNA Rooflight range
simply scan here:





The logo features the word "ALUNA" in a bold, white, sans-serif font, partially enclosed by a white square frame on its left and bottom sides. To the right of the frame, the word "WINDOW" is written in a smaller, white, spaced-out sans-serif font.

Luxury Aluminium By

ALUNET
SYSTEMS

01924 350 110

info@alunetsystems.co.uk

www.alunetsystems.co.uk



Alunet Systems
Low Mill Lane
Havelock Street
Ravensthorpe Industrial Estate
Ravensthorpe
Dewsbury
WF13 3LN